

QUIETWALK[®] VERSA

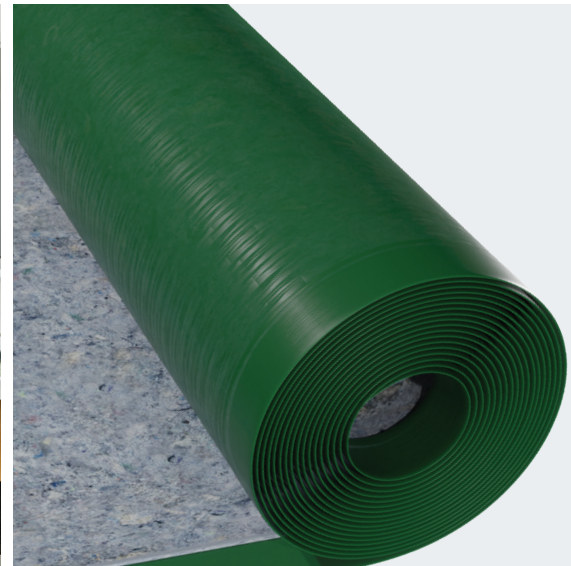
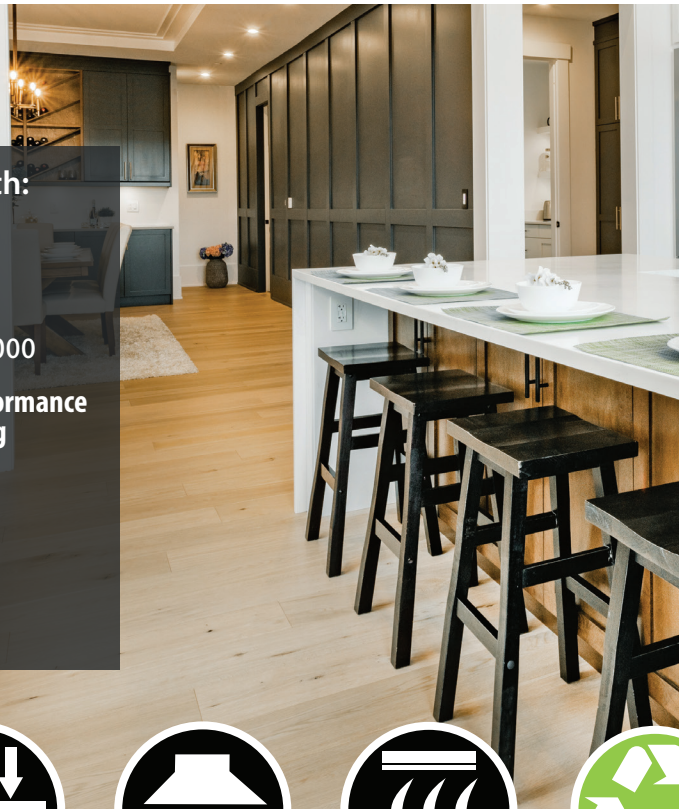
UNDERLAYMENT & WATER DEFENSIVE BARRIER

Designed for use with:

- Vinyl Plank
- Hybrid Resilient
- Laminate
- Hardwoods & Bamboo

* Provides enhanced performance for attached pad flooring

-  Click/Float
-  Nail Down
-  Glue Down



ENHANCED PERFORMANCE FOR
PAD ATTACHED FLOORING



Water Protection



Resists Compression From Daily Traffic



Sound Reduction



Insulating Value



Made From Recycled Materials

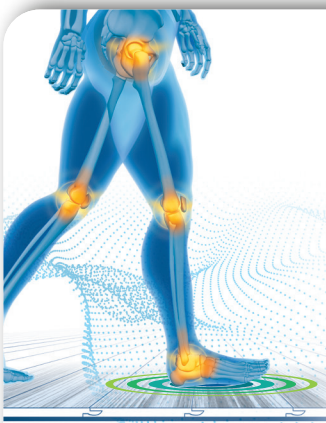


Antimicrobial Treated Fibers



Recommended For Pad Attached Flooring

For floors you WANT to live on
USE QuietWalk Versa



- **PROVEN** To Increase Comfort By Reducing Force To Your Joints*
- Minimizes Impact Energy & Sound Transmission
- Supports Your Floor, Especially With Pad Attached Planks

* University Study

Customer Reviews

★★★★★

"Good underlayment for sound and moisture control. It is also treated with an antimicrobial. The underlayment is thin but dense and made of recycled materials. It rolls out smoothly on the floor not retaining the rolled up shape. Used on concrete floor with floating laminate and the sound insulation is very good."

★★★★★

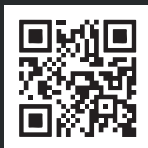
Absolute Must Have

"Absolutely love it. Even though the flooring didn't require it, it makes a tremendous difference. I've completed 4 rooms with it and 1 room without it and the difference is significant."

★★★★★

Sturdy, and cushy

"Great padding for under luxury vinyl plank."



Scan to view installation videos, warranty and tips!



RATED RESIDENTIAL AND COMMERCIAL

PROUDLY
Made in the U.S.A.

UNMATCHED TOP & BOTTOM SIDE WATER PROTECTION

FEATURING **EXCLUSIVE DRI-WICK TECHNOLOGY**

Dual Protection:

Shields your floors from both top-side and bottom-side moisture

Built-in vapor barrier:

Protects from moisture above

Fast-Acting Moisture Wicking Fibers ▶

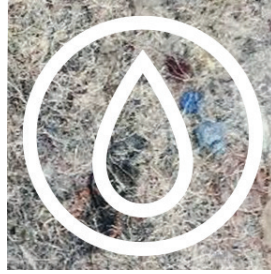
Quickly draws moisture away to prevent damage below

High pH Resistance:

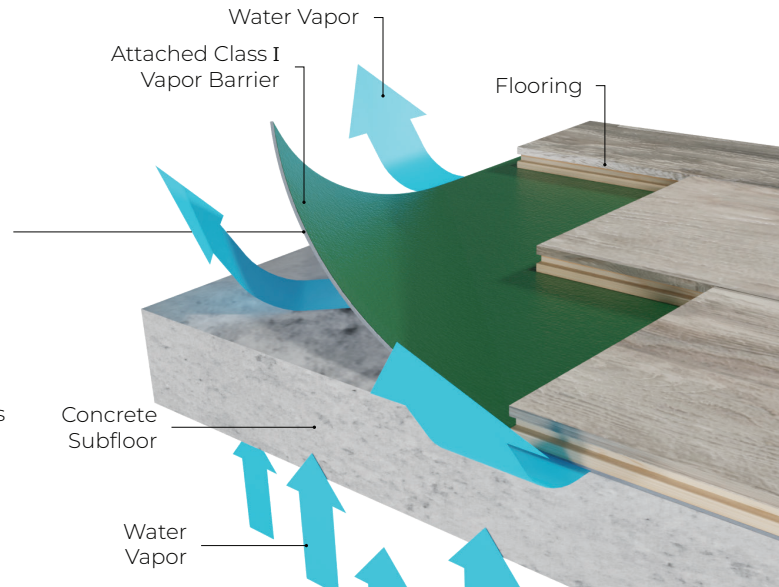
Safeguards against alkaline damage from concrete subfloors

Protects Your Investment:

Extends the life of your flooring



Antimicrobial treated recycled fiber pad attacks subfloor moisture by wicking and dispersing it throughout the pad, drawing it up and away



SUPERIOR SOUND ABSORPTION

Fiber construction absorbs impact and ambient sound to create a better living space for everyone!

Industry leading IIC Δ Delta: 28

The higher the STC & IIC number, the better the noise control!



(STC) **64**
AMBIENT SOUND



(IIC) **72**
IMPACT SOUND



SMOOTHS MINOR SUB-FLOOR IMPERFECTIONS

Firm and supportive helping with subfloor roughness which cuts down on subfloor prep. Provides extra support for planks even with pad attached.



SUITABLE FOR USE WITH IN-FLOOR HEATING SYSTEMS



RECYCLED FIBERS

Patented process re-purposes fibers otherwise going to our landfills.



USGBC MEMBER

Can contribute to green building credits as outlined with the USGBC.



GREENGUARD GOLD certified for low emissions, conforming to Indoor Air Quality standards and Collaborative for High Performance Schools (CHPS) - CA Section 01350.



ADDS INSULATION VALUE

Helps home insulation and provides additional comfort during seasonal changes by adding an **R-Value of 0.53** to a floor system!



SUPPORT FOR PAD ATTACHED FLOORING

Dense, uncrushable fiber pad provides continuous support for floor joints where pre-attached pads can't reach.



TECHNICAL DATA

- **Materials:** Blended recycled synthetic fibers, polyethylene film and inert hot-melt adhesive
- **Lip & Tape Included:** Yes
- **Antimicrobial Protection:** Yes
- **Weight:** 9lbs/100ft² roll · 30lbs/360ft² roll
- **Thickness:** 1.4mm
- **Density:** 18.28lbs/ft³
- **Compression Set:** 8.8%
- **Compression Resistance:** 64.58psi
- **R-Value (@ 1.4mm):** 0.53hr-ft²-degF/Btu
- **WVTR:** 0.12lbs/1000ft² /24hrs
- **Perm Rating:** 0.06
- **Subfloor Moisture Emissions Allowance:** NO LIMIT
- **Approved Subfloors:** All properly prepared concrete and wood materials
- **Flammability:** Meets or exceeds Federal Flammability Standards: 1-70 (Pill Test)
- **Warranty:** Transferable LTD Lifetime



Scan to view installation videos, warranty and tips!

RATED RESIDENTIAL AND COMMERCIAL



Scan for current pallet & truck configurations, or visit www.mpglobalproducts.com/packout-information/