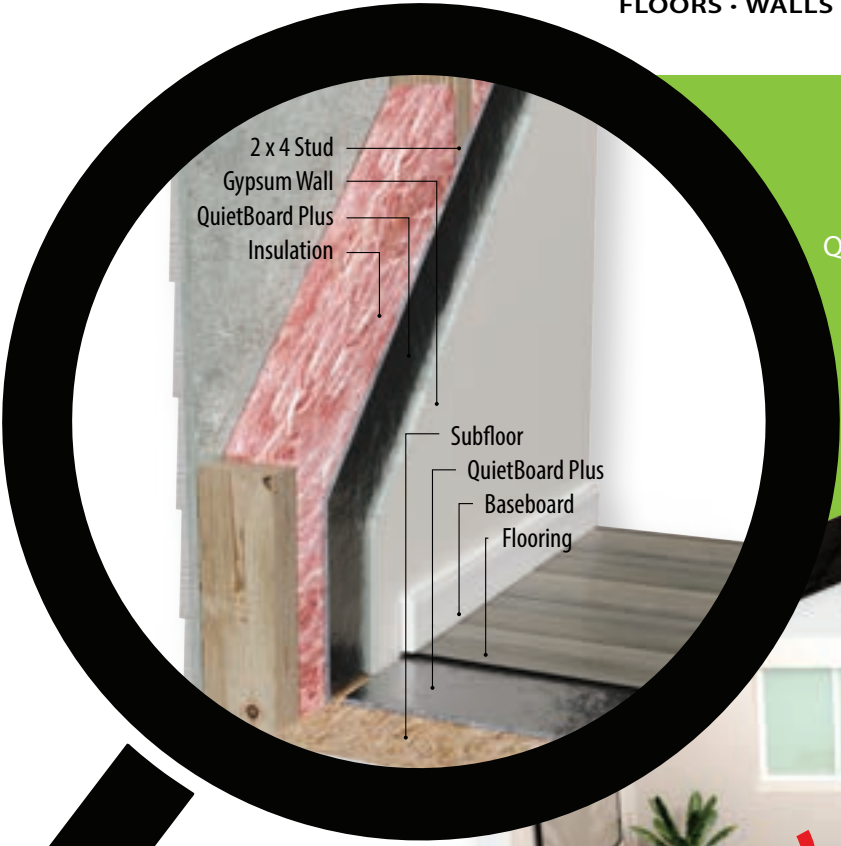


QUIETBOARD[®] Plus

PREMIUM ACOUSTICAL FIBER BOARD
FLOORS • WALLS • CEILINGS



FLOORS • WALLS • CEILINGS

QuietBoard Plus can deaden up to 60 decibels of sound transfer in a standard build. For reference, average TV volumes at a safe listening levels produce between 60dB - 65dB



ACOUSTICAL BARRIER
Deadens nuisance noise to create a more comfortable environment



CLASS C FIRE RATING
Can be introduced to any fire rated assembly without negatively impacting the fire rating



THERMAL REFLECTIVE VAPOR RETARDER
Increase energy efficiency by reducing temperature transfer



RECYCLED FIBER
Contributes to LEED credits



LIGHTWEIGHT
Reduces overall weight of the structure



GREENGUARD GOLD CERTIFIED
Tested and proven low VOC's and no off-gassing



EASY INSTALLATION
Save time and money with simple installation methods



MADE IN THE USA

GREAT FOR MULTIFAMILY DWELLINGS, HOSPITALS, DORMITORIES, COMMERCIAL SPACES AND MUCH MORE

QUIETBOARD[®]

PREMIUM ACOUSTICAL FIBER BOARD
FLOORS • WALLS • CEILINGS

Plus

SPECIFICATIONS

Class C Fire Rated
ASTM E84

Thickness
1/4" (6mm)

**Thermal Reflective
Vapor Retarder**

Weight
0.55lbs/ft²

Materials:
100% Recycled Fibers

R-value
0.73-Hr-ft²-degf/btu

Density
22.608lbs/ft³

**No Vocs /
Antimicrobial
Treated Fibers**

Force Reduction:
13.1%

**Compression
Resistance**
496.8 Psi

**Castor Chair Test
Reached 25,000
Cycles**

**Approved For
Use With In-floor
Heating Systems**

SOUND SCORES

SOUND TRANSMISSION Class (STC)

This method is to measure the air-borne sound insulating property of a partition element for effectiveness in blocking sound.

STC OITC Structure

53 33 3 5/8" Steel Stud / 3.5" Insulation / QuietBoard Plus

52 40 2x6 Plate / 2x4 Stud Staggered / 3.5" Insulation / QuietBoard Plus

50 35 2x6 Plate / 2x4 Stud / QuietBoard Plus

47 31 2x6 Plate / 2x6 Stud / QuietBoard Plus

INSTALLATION INSTRUCTIONS

1. Mount panels to the studs, film side out
2. Attach panels using approved fastening method
3. Tape seams with HVAC heat resistant tape
4. Install sheet rock according to manufacturer's specification

PACKAGING

- (4'x6') 23 Pallets per truck / 150 panels per pallet / 3,450 total panels per truck (82,800 sqft)
- (2'x3') Retail pack out - 58 pallets per truck / 15 panels per box / 16 boxes per pallet / 13,920 total panels per truck (83,520 sqft)



LEED CREDITS

- MR 4.1 10% recycled content
- MR 4.2 20% recycled content
- MR 5.1 10% content manufactured within 500 miles of project
- MR 5.2 20% content manufactured within 500 miles of project
- MR 6 Rapidly renewable resource EQ 4.3 low emitting VOC's