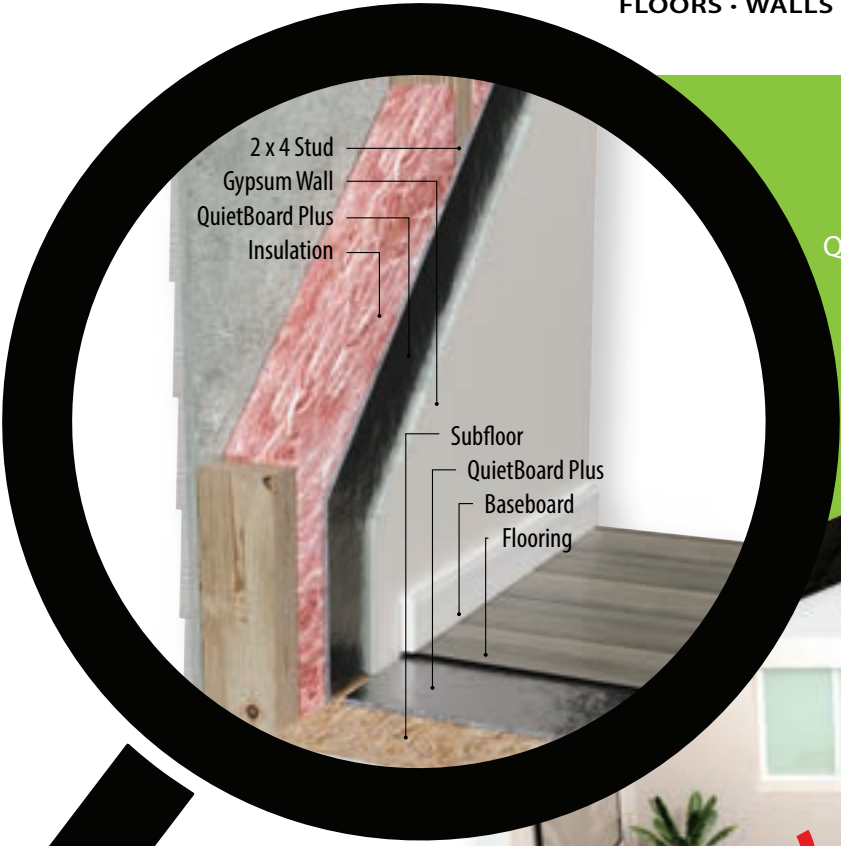


QUIETBOARD[®] Plus

PREMIUM ACOUSTICAL FIBER BOARD
FLOORS • WALLS • CEILINGS



FLOORS • WALLS • CEILINGS

QuietBoard Plus can deaden up to 60 decibels of sound transfer in a standard build. For reference, average TV volumes at a safe listening levels produce between 60dB - 65dB



ACOUSTICAL BARRIER
Deadens nuisance noise to create a more comfortable environment



CLASS C FIRE RATING
Can be introduced to any fire rated assembly without negatively impacting the fire rating



THERMAL REFLECTIVE VAPOR RETARDER
Increase energy efficiency by reducing temperature transfer



RECYCLED FIBER
Contributes to LEED credits



LIGHTWEIGHT
Reduces overall weight of the structure



GREENGUARD GOLD CERTIFIED
Tested and proven low VOC's and no off-gassing



EASY INSTALLATION
Save time and money with simple installation methods



MADE IN THE USA

GREAT FOR MULTIFAMILY DWELLINGS, HOSPITALS, DORMITORIES, COMMERCIAL SPACES AND MUCH MORE

QUIETBOARD®

PREMIUM ACOUSTICAL FIBER BOARD
FLOORS • WALLS • CEILINGS

Plus

SPECIFICATIONS

Class C Fire Rated ASTM E84	Thickness 1/4" (6mm)
Thermal Reflective Vapor Retarder	Weight 0.55lbs/ft ²
Materials: 100% Recycled Fibers	R-value 0.73-Hr-ft ² -degf/btu
Density 22.608lbs/ft ³	No Vocs / Antimicrobial Treated Fibers
Force Reduction: 13.1%	Compression Resistance 496.8 Psi
Castor Chair Test Reached 25,000 Cycles	Approved For Use With In-floor Heating Systems

SOUND SCORES

SOUND TRANSMISSION Class (STC)

This method is to measure the air-borne sound insulating property of a partition element for effectiveness in blocking sound.

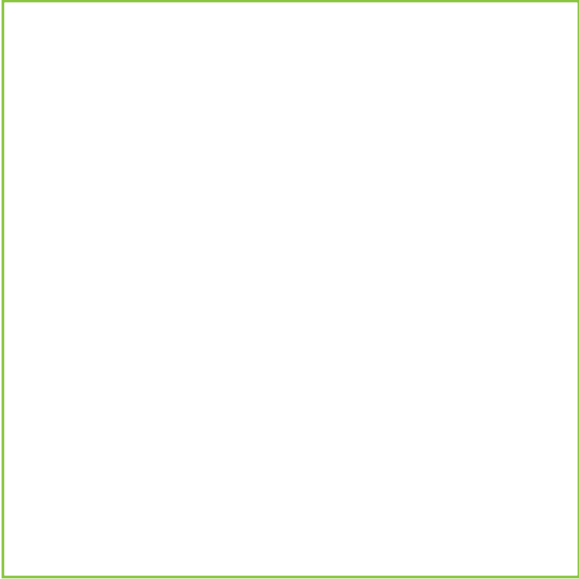
STC	OITC	Structure
53	33	3 5/8" Steel Stud / 3.5" Insulation / QuietBoard Plus
52	40	2x6 Plate / 2x4 Stud Staggered / 3.5" Insulation / QuietBoard Plus
50	35	2x6 Plate / 2x4 Stud / QuietBoard Plus
47	31	2x6 Plate / 2x6 Stud / QuietBoard Plus

INSTALLATION INSTRUCTIONS

1. Mount panels to the studs, film side out
2. Attach panels using approved fastening method
3. Tape seams with HVAC heat resistant tape
4. Install sheet rock according to manufacturer's specification

PACKAGING

- (4'x8') 17 Pallets per truck / 150 panels per pallet / 2,550 total panels per truck (81,600 sqft)
- (2'x4') Retail pack out - 54 pallets per truck / 12 panels per box / 16 boxes per pallet / 10,368 total panels per truck (82,944 sqft)



REV: 0924 DOC# 214079



LEED CREDITS

- MR 4.1 10% recycled content
- MR 4.2 20% recycled content
- MR 5.1 10% content manufactured within 500 miles of project
- MR 5.2 20% content manufactured within 500 miles of project
- MR 6 Rapidly renewable resource EQ 4.3 low emitting VOC's



2500 Old Hadar Road, PO Box 2283 Norfolk, Nebraska 68702-2283
(888) 379-9695 - Toll Free · info@MPGlobalProducts.com